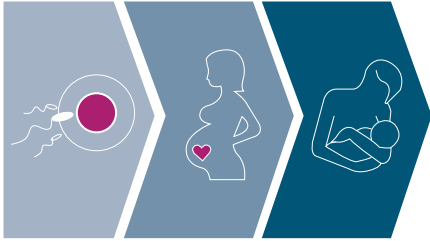




PRETERM BIRTH



40 WEEKS

A baby is born preterm, when it is born

before 37 weeks of gestation.

DEPENDING ON THE LENGTH OF PREGNANCY, IT IS DIFFERENTIATED:

extremely preterm:

less than 28 weeks of pregnancy

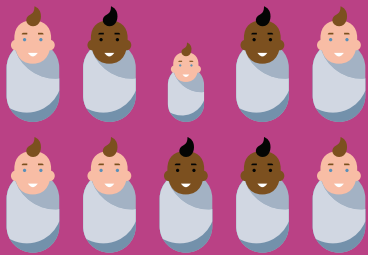
very preterm:

28 to 31 weeks of pregnancy

Moderate to late preterm baby:

32 -37 weeks of pregnancy

1 baby in 10

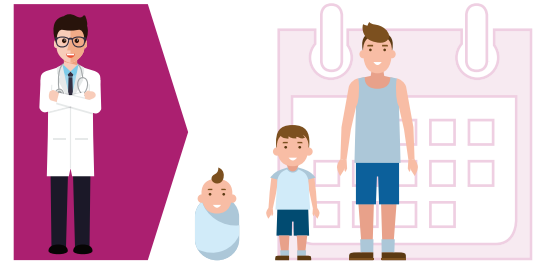


is affected by preterm birth

Prematurity can affect health throughout the whole life



REGULAR FOLLOW-UP ASSESSMENTS ARE IMPORTANT



Babies born preterm face higher risks of poorer long-term neurodevelopmental outcomes

e.g. cerebral palsy, visual and hearing impairments and mortality



PREMATURITY

is the main cause of death under 5 years

THE EARLIER a baby is born THE HIGHER is the risk for poorer long-term outcomes

not every

preterm born baby has a poor long-term outcome



This project has received funding from the European Union's horizon 2020 research and innovation programme under grant agreement number 633724.

Editing and design: EFGONI